

OLP

Diffusers - Plenum support

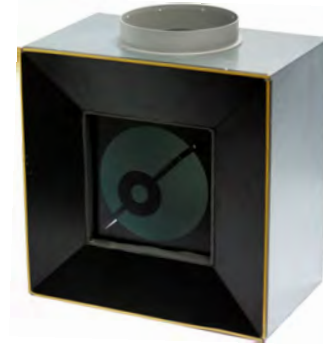
For an invisible result

Invisible grids

Support plenum OLP

Introduction

The OLP invisible diffuser is designed for installation on a perforated (climate) ceiling. The special interior and the carefully determined angle of the diffuser ensure a good air pattern. The diffuser has been developed in such a way that it is invisible from the underside of the (climate) ceiling.



Product description::

- OLP-T-H - Uninsulated supply plenum with side entry spigot
- OLPI-T-H - Insulated supply plenum with side entry spigot
- OLP-T-V - Uninsulated supply plenum with top connection
- OLP-R-H - Uninsulated return plenum with side entry spigot

Properties

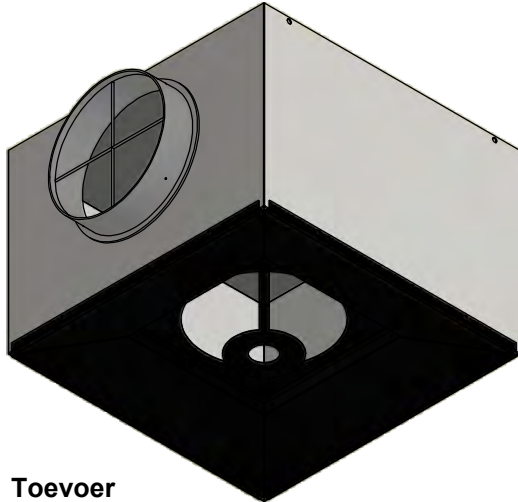
- Optically inconspicuous positioning on perforated (climate) ceilings.
- Applicable on ceiling panels R2,5/16%.
- Very good blow-in properties due to the special interior with built-in cone.
- Suitable for both cooling and heating with relatively large temperature differences.
- Optimal use of the cooling and heating capacity of the ceiling panel.
- Due to the reduction of the Coanda effect very short throw lengths.
- Minimal soiling of the ceiling surface.
- Very low noise level.
- Meets the requirements of climate class B according to EN - NEN 15251.
- Maximum draught rating of 20% in the most unfavorable place.



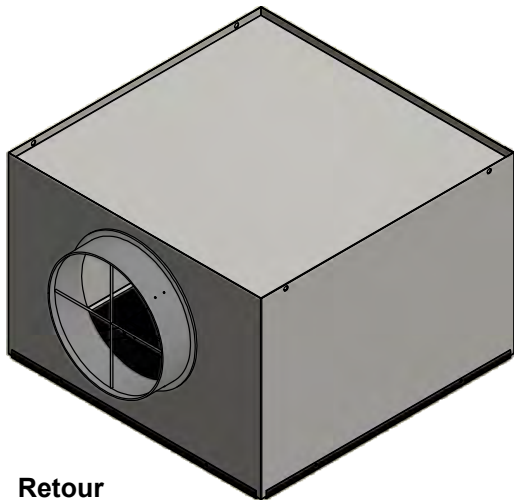
Technical data

Finishing

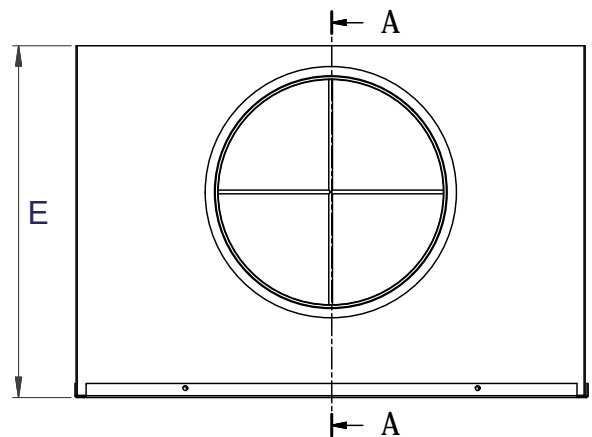
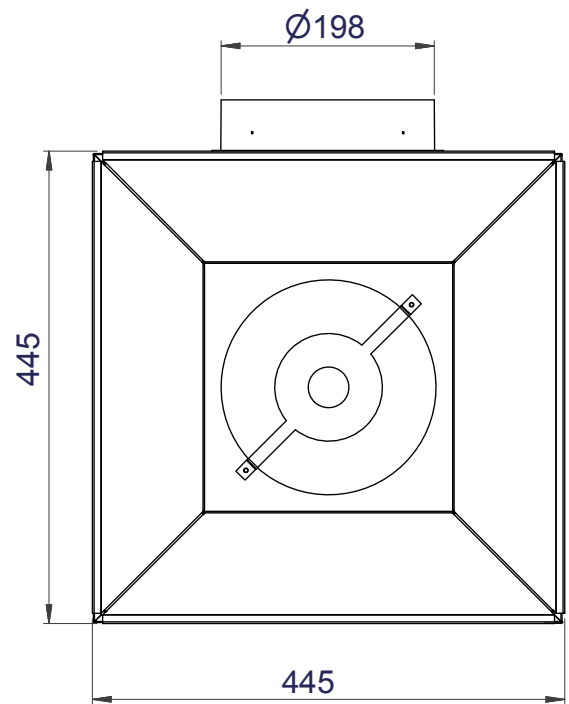
- Inside RAL 9005 (black)
- Plenum box sendzimir galvanised
- Equipped with sealing tape on the connection surface
- Other colours available on request



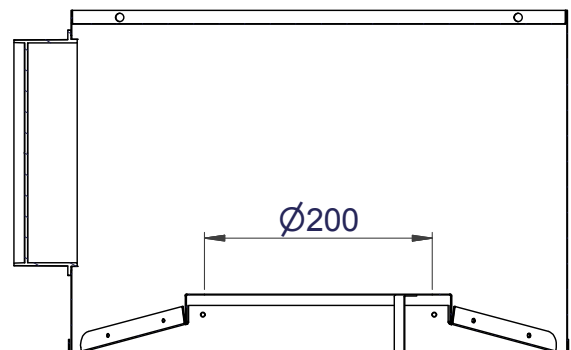
Toevoer



Retour



A-A (1 / 5)



Sizes

# 260/280	- dia 100/125	- E = 220/240
# 320/340	- dia 125/160	- E = 240/275
# 425/445	- dia 160/200	- E = 275/300
# 540/560	- dia 200/250	- E = 300/340
# 625/645	- dia 250	- E = 340

OLP-oplegplenums R2,5/16-18%								
OLP(I)-T-H/V-250/625x625 (uitw. 645x645) / E=340 mm (tenzij ovaal, dan 300 mm)								
			Worplengte bij plafondhoogte 2,8 meter					
M3/h	Aansl. diameter	Inbouw-hoogte	ΔT -9K	ΔT -6K	Isotherm	ΔT +6K	Drukverlies	Lp-dBA (8 dB damping)
50								
75								
100								
125								
150								
175								
200	250 mm ov./Ø	300/340 mm	-	-	1	1,3	3	<15
250	250 mm ov./Ø	300/340 mm	-	1,1	1,4	1,6	5	<15
300	250 mm ov./Ø	300/340 mm	-	1,4	1,7	1,9	7	<20
350	250 mm ov./Ø	300/340 mm	-	1,8	2	2,1	9	24
400	250 mm ov./Ø	300/340 mm	-	2	2,3	2,6	12	27
450	250 mm ov./Ø	300/340 mm	-	2,4	2,7	3	17	30
500	250 mm ov./Ø	300/340 mm	-	2,6	3	3,4	21	35

OLP-oplegplenums R2,5/16-18%								
OLP(I)-T-H/V-250/625x625 (uitw. 645x645) / E=340 mm								
			Worplengte bij plafondhoogte 2,8 meter					
M3/h	Aansl. diameter	Inbouw-hoogte	ΔT -9K	ΔT -6K	Isotherm	ΔT +6K	Drukverlies	Lp-dBA (8 dB damping)
50								
75								
100								
125								
150								
175								
200	250 mm Ø	340 mm	-	-	0,9	1,1	2	<15
250	250 mm Ø	340 mm	-	1	1,2	1,4	4	<15
300	250 mm Ø	340 mm	-	1,2	1,5	1,6	5	<20
350	250 mm Ø	340 mm	-	1,6	1,8	2	6	21
400	250 mm Ø	340 mm	-	1,8	2	2,3	9	24
450	250 mm Ø	340 mm	-	2,1	2,4	2,7	13	27
500	250 mm Ø	340 mm	-	2,4	2,7	3	16	32

Selection and ordering example:

Details

Flow rate 200 m³/h

Room temperature 25°C

Blow-in temperature 19°C

Room noise requirement max. 30 dBA

Selection

OLP-T-H/V-160/425x425 (excl. 445x445) / E=275 Throw length 1.4 metres

Static pressure loss 15 Pa

Lp sound pressure level 26 dBA (Lp = Lw - 8 dB room attenuation)

Explanation of codings::

OLP	Oplegplenum uninsulated
OLPI	Oplegplenum standard internal insulated (noise reduction 1 - 2 dB compared to the noise values in the table)
T	Supply air
H	Horizontal side connection
V	Top connection
E	Total installation height on the ceiling panel

Return/exhaustion version:

OLP-R-H/V-160/425x425 .(445x445) / E=275

OLP	Oplegplenum uninsulated
R	Return/exhaustion
H	Horizontal side connection
V	Top connection
E	Total installation height on the ceiling panel

Return/exhaustion selections:

Supply air pressure loss values x 0.75

Supply air sound pressure values minus 7 dBA



OC Waterloo
Ondernemersweg 2
7451 PK Holten

T 0548-374 375
E info@oc-waterloo.nl